


COMUNE DI CORSANO

Provincia di Lecce

PIANO DI LOTTIZZAZIONE
COMPARTO 1.1 - COMP.2.3



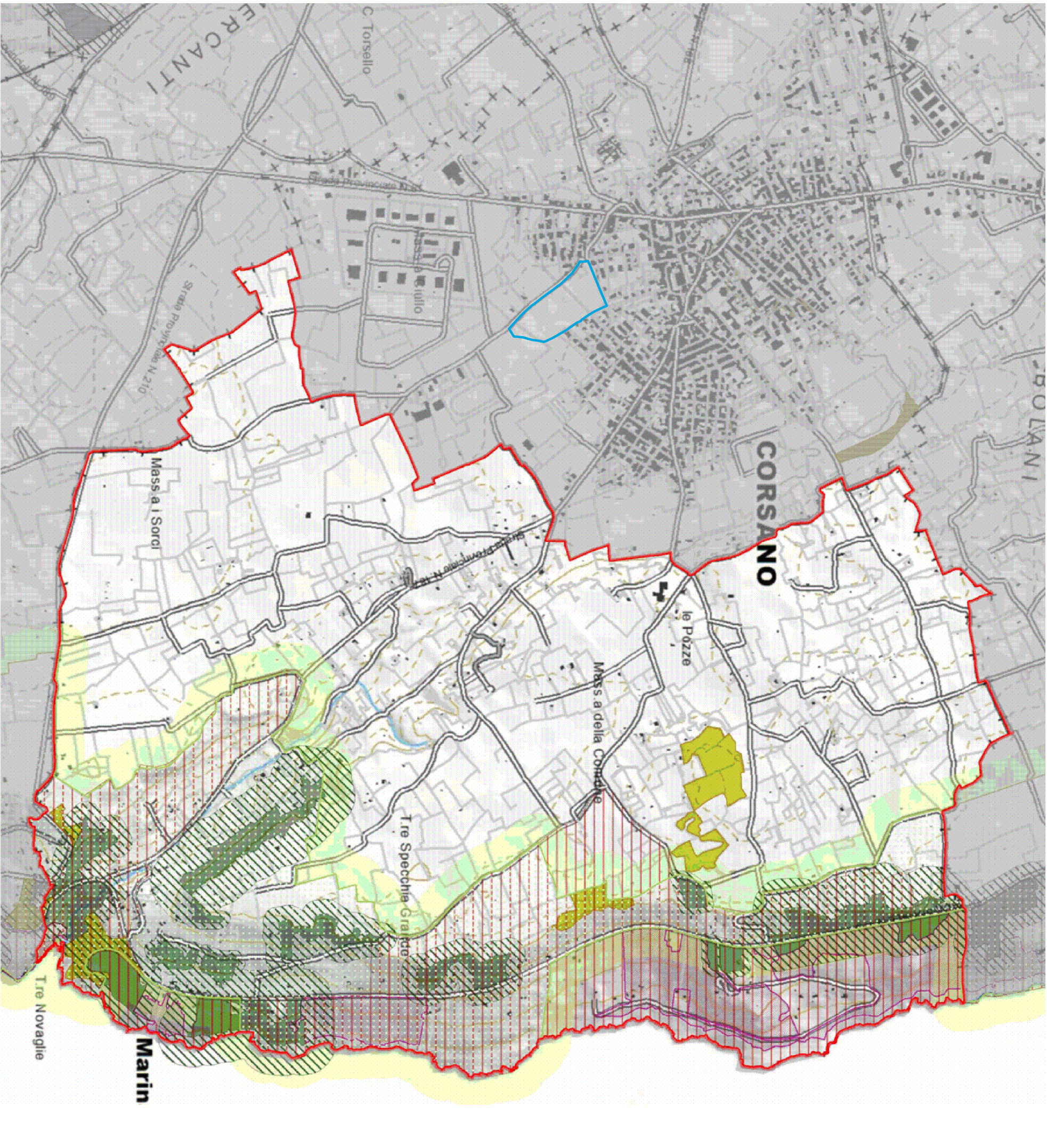
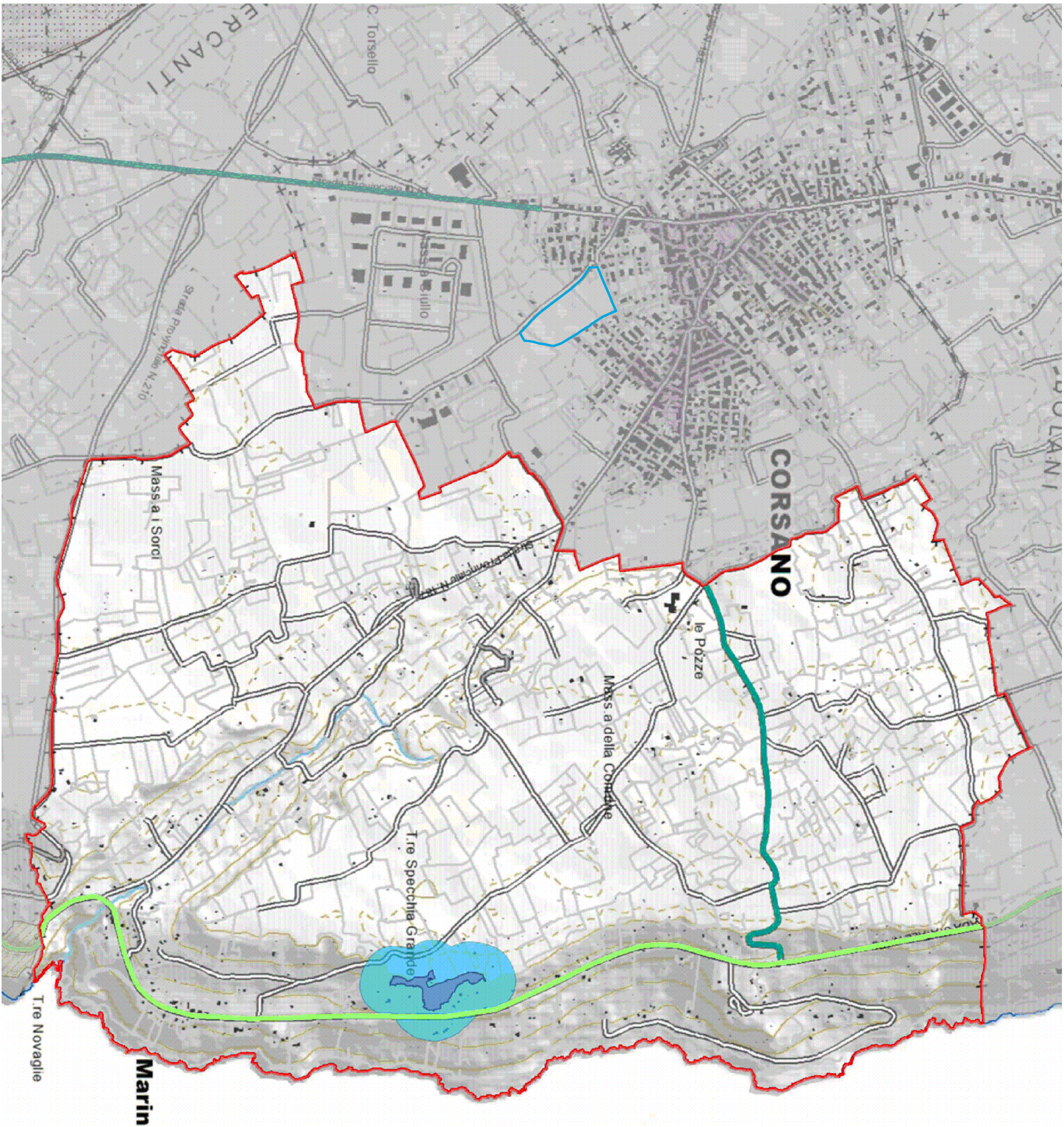
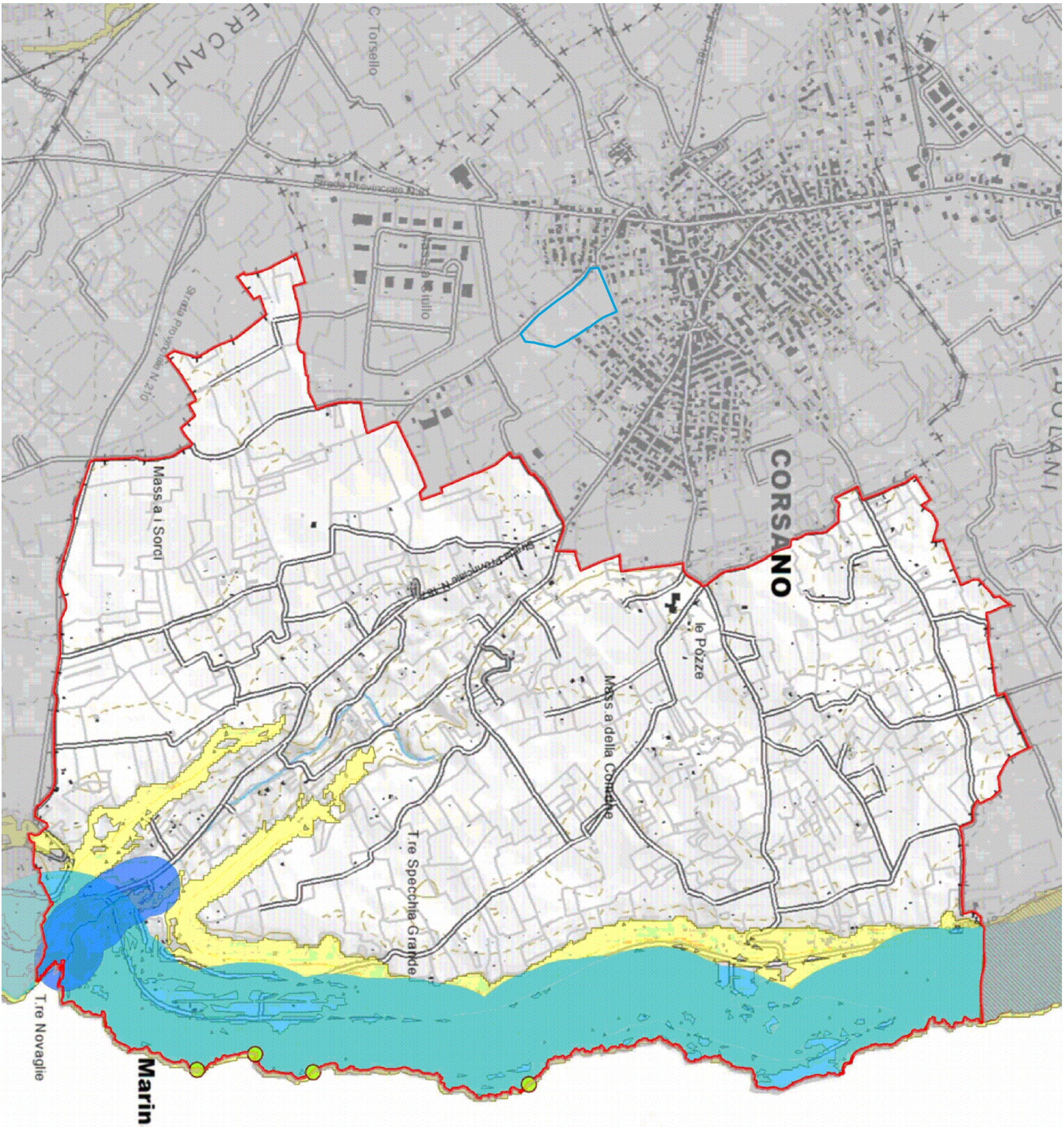
ELABORATO:

Planimetria sovrapposta alle tavole P.p.t.r.

Scala: 1:1000

TAV.
15

PROGETTISTI:
ING. ANTONIO DE MAI;
ARCH. VINCENZO RUBINO;
GEOM. VINCENZO ORLANDO;
GEOM. MASSIMO CALABRESE



LEGENDA:

PERIMETRO PIANO DI LOTTIZZAZIONE